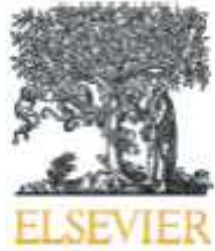


Photo: Jens Friis Lund.



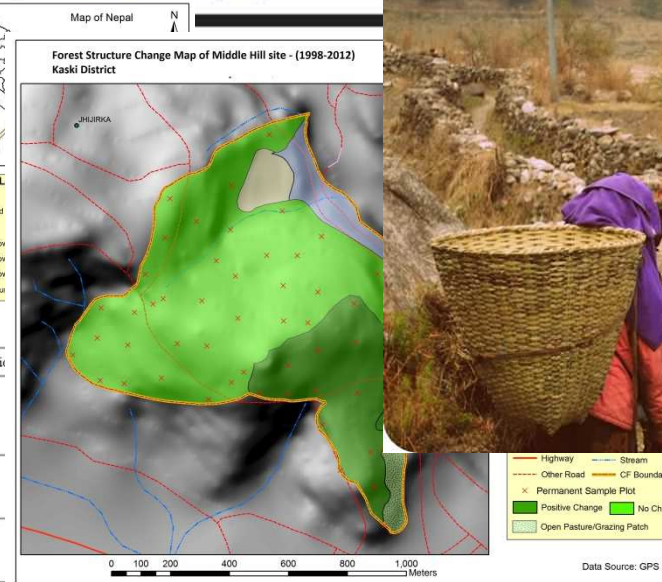
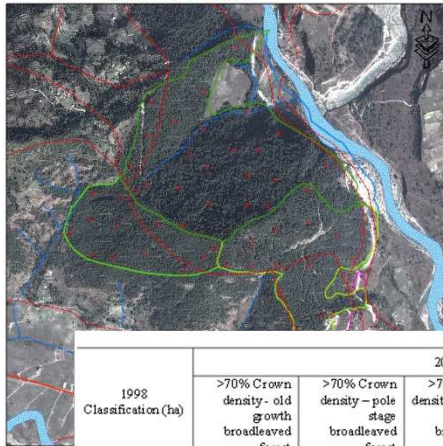
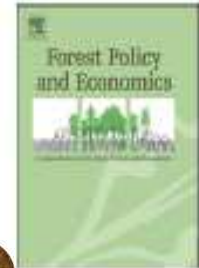
In the forests of Nepal..



Contents lists available at ScienceDirect

Forest Policy and Economics

journal homepage: www.elsevier.com/locate/fpe



1998 Classification (ha)	2012 classification						
	>70% Crown density - old growth broadleaved forest	>70% Crown density - pole stage broadleaved forest	>70% Crown density - pole to tree stage broadleaved forest				
>70% Crown density - old growth broadleaved forest	39						
>70% Crown density - pole stage broadleaved forest		14	22				
Cultivated land							
Open pasture / grazing patch		1			2		3
Cliff / river bank						6	6
Total	39	15	22	3	2	6	98

What's really going on here?

We challenge the scientific forest
management regime in its current form,
as its formal justifications
appear unfounded.

A photograph of a wooden frame lying on a ground covered in broken glass shards. The frame is made of light-colored wood and is positioned diagonally across the frame. The ground is covered in numerous sharp, translucent glass fragments of various sizes. The overall scene suggests a state of destruction or a hazardous environment.

Unpack your own 'scientific frame':

1. *Why this* science?

2. Does it make sense?

3. What are the effects?

Thank you!

For four minutes of your time.

*Rebecca L. Rutt, Ph.D.
University of Copenhagen, Denmark*

DET NATUR- OG
BIOVIDENSKABELIGE FAKULTET
KØBENHAVNS UNIVERSITET

